

# BULLS EYE 2019

## AFTERMARKET APR 2019

### IN THIS ISSUE:

**NEW**

- PRODUCT IN FOCUS
- SPECIAL NOTICE
- TECH TIPS
- NEW PRODUCTS & SUPERSESSIONS
- EMPLOYEE PROFILE

[www.meritorpartsonline.com.au](http://www.meritorpartsonline.com.au)

**RUN**  
WITH THE **BULL**

  
**MERITOR**



# BULLS EYE 2019

**NEW**

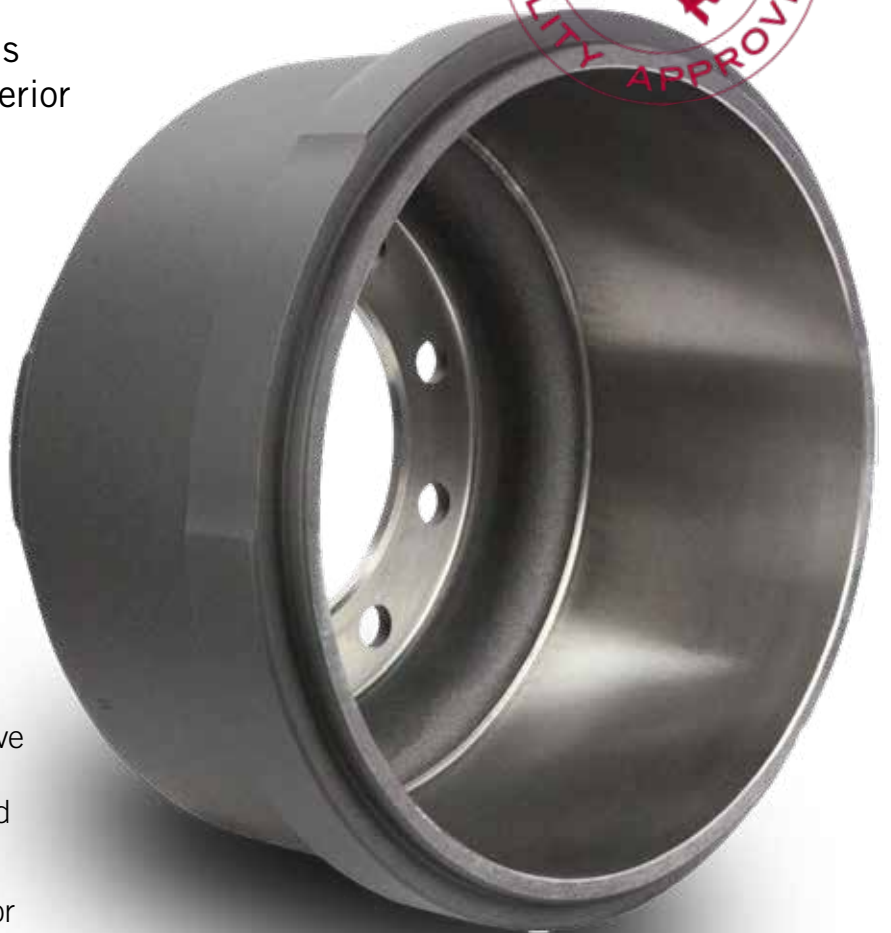
## **PRODUCT IN FOCUS** **MERITOR OPTICAST.** **THE LIGHTER, THE BETTER.**



Meritor® Opti-Cast™ Brake Drums combine cost efficiency and Superior Performance on the road.

### **PERFORMANCE ADVANTAGES:**

- Designed, tested and approved by Meritor for economical, lasting performance in light and standard duty on-highway applications
- Engineered for optimal weight at 46.9 kgs for maximum heat absorption and dissipation
- Durability superior to that of competitive economical brake drums - thanks to enhanced alloy blending, for increased strength and performance
- Covered by Meritor's 1 Year Warranty for peace of mind



Find out more



**RUN  
WITH THE BULL**



[WWW.MERITORPARTSONLINE.COM.AU](http://WWW.MERITORPARTSONLINE.COM.AU)



# BULLS EYE 2019



## SPECIAL NOTICE BRISBANE TRUCK SHOW 2019 YOU WON'T MISS IT, WILL YOU?



VISIT OUR BOOTH AT  
HALL 2 - ALLOCATION 73

The Brisbane Truck Show will return to the world's best Brisbane Convention and Exhibition Centre from Thursday 16th to Sunday 19th May 2019. The show is recognised internationally amongst the world's leading industry business events.

Visit our booth at Hall 2, allocation 73 and meet our friendly team, learn more about 14X Drive Axle, M-Tech 6 Trailer Axle, eAxle and a large range of Aftermarket parts.

### THERE'S SOMETHING ON THE HORIZON. Visit us and find out.

We're moving the industry in an entirely new direction. And we invite you to run with us. Nobody knows where the road leads, but we do know that to get there, we need to be smarter, leaner, cleaner and more efficient. EVERYTHING IS ABOUT TO CHANGE.

**MERITOR** | **BLUE HORIZON™**

**RUN  
WITH THE BULL**



[WWW.MERITORPARTSONLINE.COM.AU](http://WWW.MERITORPARTSONLINE.COM.AU)



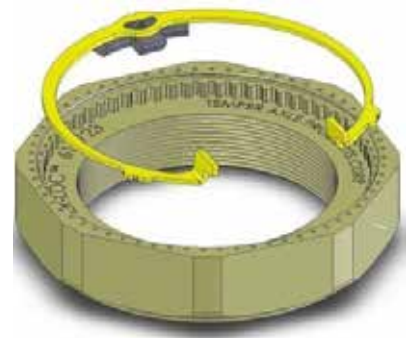
## TECH TIPS

### TEMPER-LOC® SPINDLE NUTS & RETAINER INSTRUCTIONS FOR INSTALLATION AND USE

#### Before Using

Select correct Temper-Loc nut size for the spindle. Remove the yellow retainer ring. Disengage each of the locking tabs from the nut groove by pulling in on each of the side finger tabs, one at a time, and then removing the center tab from the nut groove. Save the yellow retainer ring for re-installation later.

Thoroughly inspect the retainer ring and nut. Check for bent, cracked or otherwise damaged retainer. The two side tabs of the retainer ring must spring out to both sides of the locknut groove. The key must not be loose in the retainer ring. Discard and replace the retainer ring if there is any suspicion of damage. Inspect locknuts for chips, cracks or other damage. If any damage is evident, discard and replace the Temper-Loc nut.



#### For Emergency End Play Settings

A manual procedure utilizing torque wrenches may be used when Doctor Preload is not available.

1. Install the Nut and Seat the Bearing Rollers. Thread the correct size Temper-Loc nut onto the spindle until it is up against the outer bearing. Tighten to 200 ft-lbs torque, while spinning the wheel hub in either direction. Note that at least 200 ft- lbs of torque is required in order to properly seat the hub and bearing rollers. Loosen the nut one-half turn.
2. Tighten to 100 ft-lbs of torque while spinning the wheel hub in either direction. Turn back the nut according to Table I on the reverse side.
3. Install the Retainer. After satisfactory adjustment is verified, re-install the yellow retainer ring. First insert the EasyView® center tab into the groove of the nut by holding the retainer at an angle to the nut while engaging the key in the axle keyway. Next, squeeze each end finger tab to engage the notched end tabs into the nut groove, one at a time.

#### End Play Settings Must Always Be Measured To Verify Adjustment Setting On Every Wheel End.

Industry guidelines recommend acceptable end play settings between .001" and .005" clearance. If end play measures greater than .005", tighten the Temper-Loc nut and re-measure. If no end play is measured, loosen the nut until endplay is measured. Repeat until endplay measurement is in the acceptable range.

# BULLS EYE 2019

## TECH TIPS

### TEMPER-LOC® SPINDLE NUTS & RETAINER INSTRUCTIONS FOR INSTALLATION AND USE

To prevent serious eye injury, always wear safe eye protection when you perform vehicle maintenance or service. Park the vehicle on a level surface. Block the wheels to prevent the vehicle from moving. Support the vehicle with safety stands. Do not work under a vehicle supported only by jacks. Jacks can slip and fall over. Serious personal injury and damage to components can result.

**Inspect the retainer ring to confirm it is correctly installed. Failure to do so may result in component failure and bodily injury.**

The EasyView notches of all three tabs must be completely hidden in the nut groove to be sure of correct retainer engagement. See photo series.

#### RETAINER INSTALLATION



Inserting Center Tab



EasyView Center Tab Engaged

**CHECK THAT THE EasyView® TABS AND THE LOCKING TEETH OF THE KEY ARE FULLY SEATED IN THE NUT.**



EasyView Tab **NOT** Engaged



EasyView Side Tab Engaged

**TABLE I : QUICK ADJUST FOR EMERGENCY END PLAY SETTINGS**

Spindle Size	TURN BACK AMOUNT	
	Degrees	Approx. turn
<b>TN</b> (Std. Trailer)	66°	1/6 turn
<b>TP</b> (Propar trailer)	44°	1/8 turn
<b>FF</b> (Steer axle)	52°	1/8 turn
<b>R</b> (Drive axle)	84°	1/4 turn

#### Specifications

Temper-Loc Nut Assembly Number	Replaces Stemco Number	Replacement Retainer Ring Number	Axle Spindle Application	Thread Diameter	Threads Per Inch	Tool Socket Size	Outer Bearing
MER614723	447-4723	MER644723	TP Trailer	3.480"	12	4-13/16" - 8 point	HM518445 / HM518410
MER614743	447-4743	MER644743	TN Trailer	2.625"	16	3-3/4" - 8 point	HM212049 / HM212011
MER614836	448-4836	MER644836	FF-FG Steer	1.500"	12	2-1/2" - 6 point	3782 / 3720
MER614837	448-4837	MER644837	FE Steer	1.500"	18	2-1/2" - 6 point	3782 / 3720
MER614973	449-4973	MER644973	R Drive	3.250"	12	4-3/8" - 8 point	580 / 572

Find out more



**RUN  
WITH THE BULL**



WWW.MERITORPARTSONLINE.COM.AU



# BULLS EYE 2019

## NEW PRODUCTS & SUPERSESSIONS

### NEW PRODUCTS

PART NUMBER	DESCRIPTION
Q523299P6256	BRACKET CHAMBER
Q523299Q6257	BRACKET CHAMBER
R802486	SLACK ADJUSTER AUTO 6" 1.50X28 SPL
E-8888	DIAPHRAGM ASSY TYPE 9

### SUPERSESSIONS

All parts displayed in New Products & Supersessions will be available for immediate ordering. Lead times apply for the listed items. Not all parts are available to Independent Customers. Please contact Meritor Customer Service on (03) 8353 6050 for further information. For full list of supersessions, [CLICK HERE](#)



# BULLS EYE 2019

## EMPLOYEE PROFILE JIM ASSIMAKOPOULOS

ROLE AT MERITOR: Warehouse Supervisor  
YEAR OF JOIN: 2019



**1. What is your background?**

I have an extensive background at TOYOTA Australia I began life in manufacturing on the assembly line in 1997 then moved to Warehousing in 2000 – 2018 I was promoted to T/L in 2002 and then to Senior Group Leader in 2008. By 2018 I was overseeing a group of 25 team members.

**2. Tell us a little bit about your main job responsibilities.**

My current responsibilities are firstly to oversee the safety and wellbeing of my team and the timely distribution of Meritor parts to our distributor network and overseas customers.

**3. What do you enjoy most about your role?**

No day is the same. Each day presents a unique challenge. I also enjoy interacting with people from all levels on a day to day basis.

**4. What is your biggest challenge in your new role as Warehouse Supervisor ?**

Currently it is the roll out of our new R/F scanning system and the challenges it presents, however we are winning!

**5. What are your interests outside work?**

I enjoy spending time with family and I am a competitive powerlifter.



**MERITOR**

**MERITOR HEAVY VEHICLE SYSTEMS AUSTRALIA**

T/A Meritor CVA Australia  
50 Calarco Drive, Derrimut  
Melbourne - VIC 3026 - Australia

Phone: (613) 8353 6050  
[cvaau.sales@meritor.com](mailto:cvaau.sales@meritor.com)  
[www.meritorpartsonline.com.au](http://www.meritorpartsonline.com.au)