



**Date:** March 2014  
**Subject:** RPL 5" Slip Introduction  
**Models:** RPL25HD drivelines

Dear Customer,

To improve the operational capabilities of the RPL 25 driveline when used with high mobility suspensions, Meritor Australia will replace the existing 3.5" slip assemblies with a 5" slip assembly for drivelines with a compressed length greater than 20.51". For drivelines with a compressed length between 19" and 20.51" the 3.5" slip assembly will continue to be offered.

### Part Number

The new 5" Slip part numbers will be 25RHS044CXXXH

C – Painted

XXX – Required tube length (Ref FIG 2 – "T") in inches and 1/10's added as suffix to the part number.

Example for "T" = 15.3 inches, the assembly number is 25RHS044C153H

### Driveline Minimum Length

The minimum collapsed length for the 5" Slip Assembly is 20.51" (25RHS044C028H)

The minimum collapsed length for the 3.5" Slip Assembly is 19" (25RHS022B026H)

The existing 3.5" Slip Assemblies listed below will continue to be available if the required collapsed length is between 19" and 20.51"

- 25RHS022B026H
- 25RHS022B028H
- 25RHS022B030H
- 25RHS022B032H
- 25RHS022B034H
- 25RHS022B036H
- 25RHS022B038H
- 25RHS022B040H



### Aftermarket Support

The method used in the example below can be used to determine the equivalent 5" slip assembly to replace an existing 3.5" slip assembly in service

Example: A 5" slip assembly replacement is required for an existing 3.5" slip assembly, part number 25RHS022B538H

#### Calculation 1:

To determine the collapsed Length (A) for 25RHS022B538H (Ref FIG 1)

$$\begin{aligned} A &= T + 16.4" \\ &= 53.8" + 16.4" \\ &= 70.2" \end{aligned}$$

#### Calculation 2:

To determine the Tube Length (T) required for the 5" driveline assembly based on the collapsed length of 25RHS022B538H (Ref FIG 2)

$$\begin{aligned} T &= A - 17.9" \\ \text{From calculation 1, } A &= 70.2" \\ T &= 70.2" - 17.9" \\ &= 52.3" \end{aligned}$$

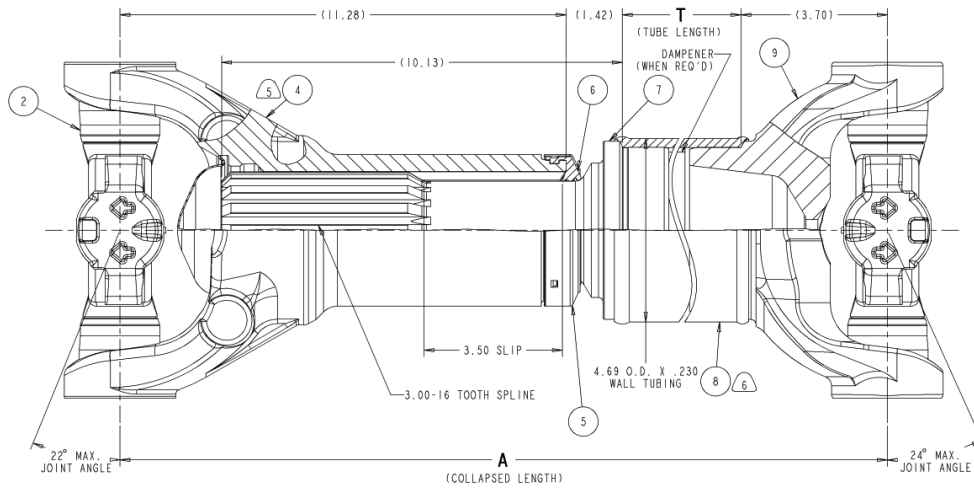
### Selecting the Equivalent 5" Part Number

The RPL 5" Slip Assembly part numbers are generally available at every 0.5" tube length. As per the calculation method the required part number is 25RHS044C523H, however, the nearest available part number is 25RHS044C525H.

5" slip assembly 25RHS044C525H will replace the existing 3.5" slip assembly 25RHS022B538H.



### RPL 3.5" Slip Assembly Base Family

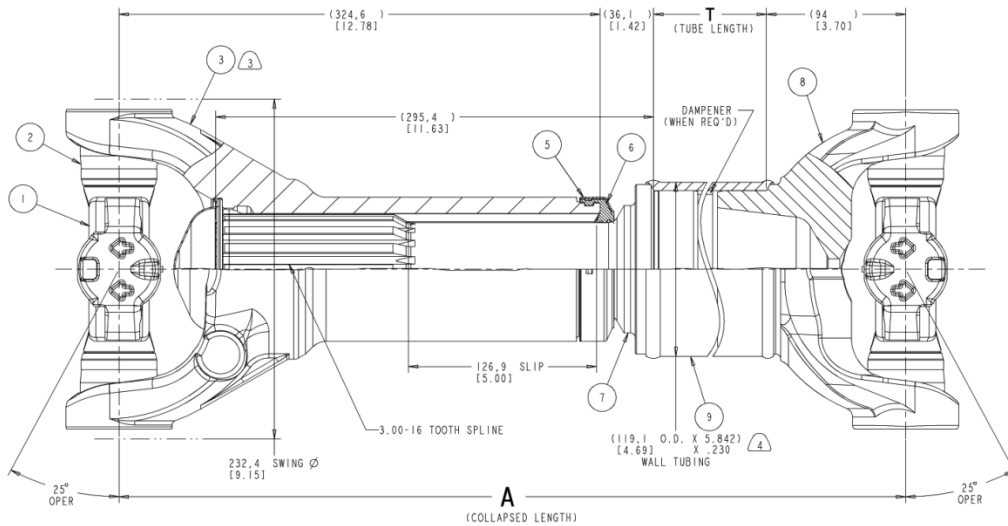


**T = A - 16.40**  
**MIN. A = 19.00 UNDAMPENED**  
**MIN. A = 25.40 DAMPENED**

LENGTH = REQUIRED "T" DIMENSION IN INCHES AND  
 1/10'S ADDED AS SUFFIX TO PART NUMBER.  
 EXAMPLE: "T" = 15.3 ASSY NO. IS 25RHS022B153

**FIG 1**

### RPL 5" Slip Assembly Base Family



**T = A - 454.66 [17.90]**  
**MIN. A = 520.954 [20.51] UNDAMPENED**  
**MIN. A = 683.26 [26.90] DAMPENED**

LENGTH = REQUIRED "T" DIMENSION IN INCHES AND  
 1/10'S ADDED AS SUFFIX TO PART NUMBER.  
 EXAMPLE: "T" = 15.3 ASSY NO. IS 25RHS044C153

**FIG 2**